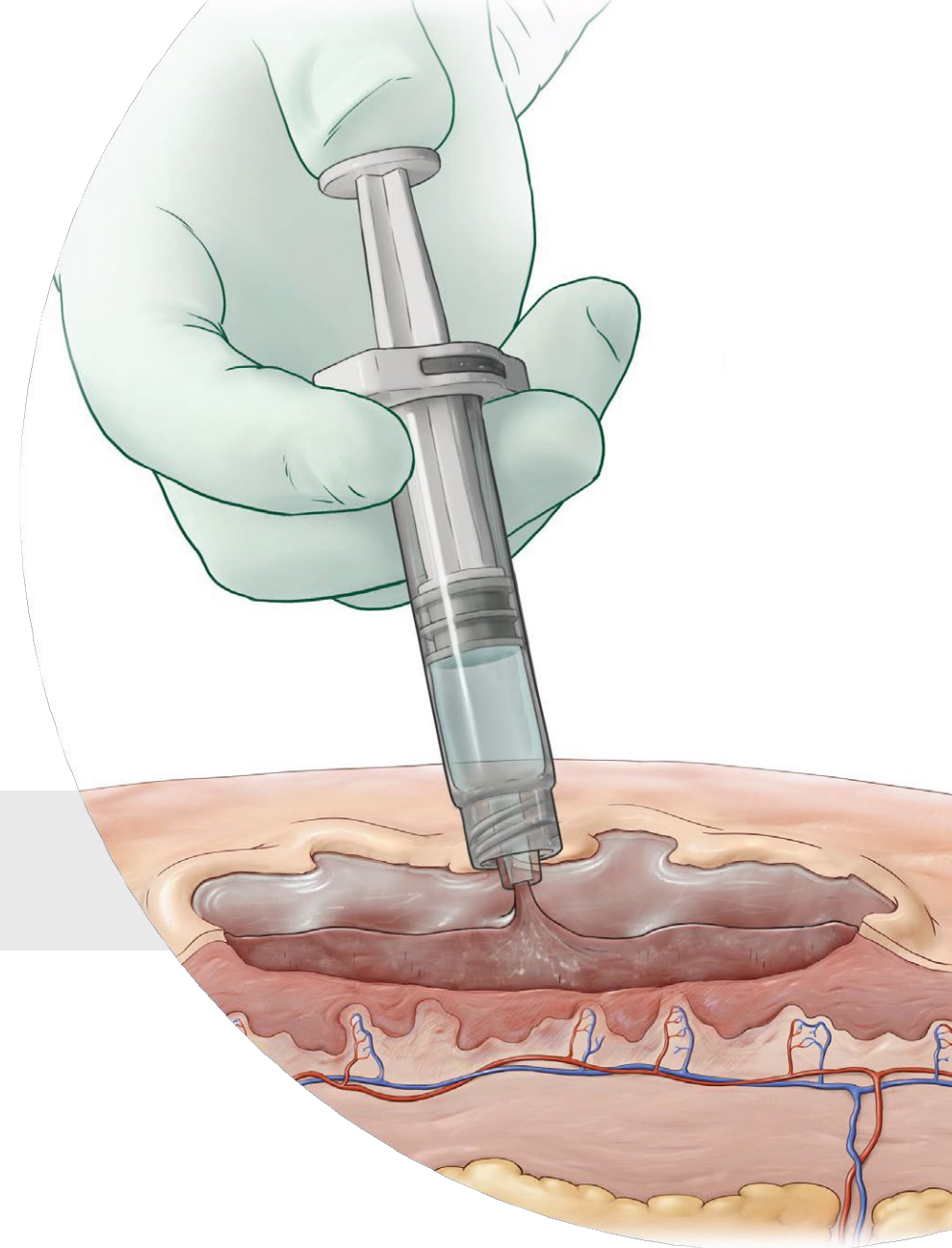


G4Derm^{plus}

Biomimetic Matrix

PRODUCT OVERVIEW

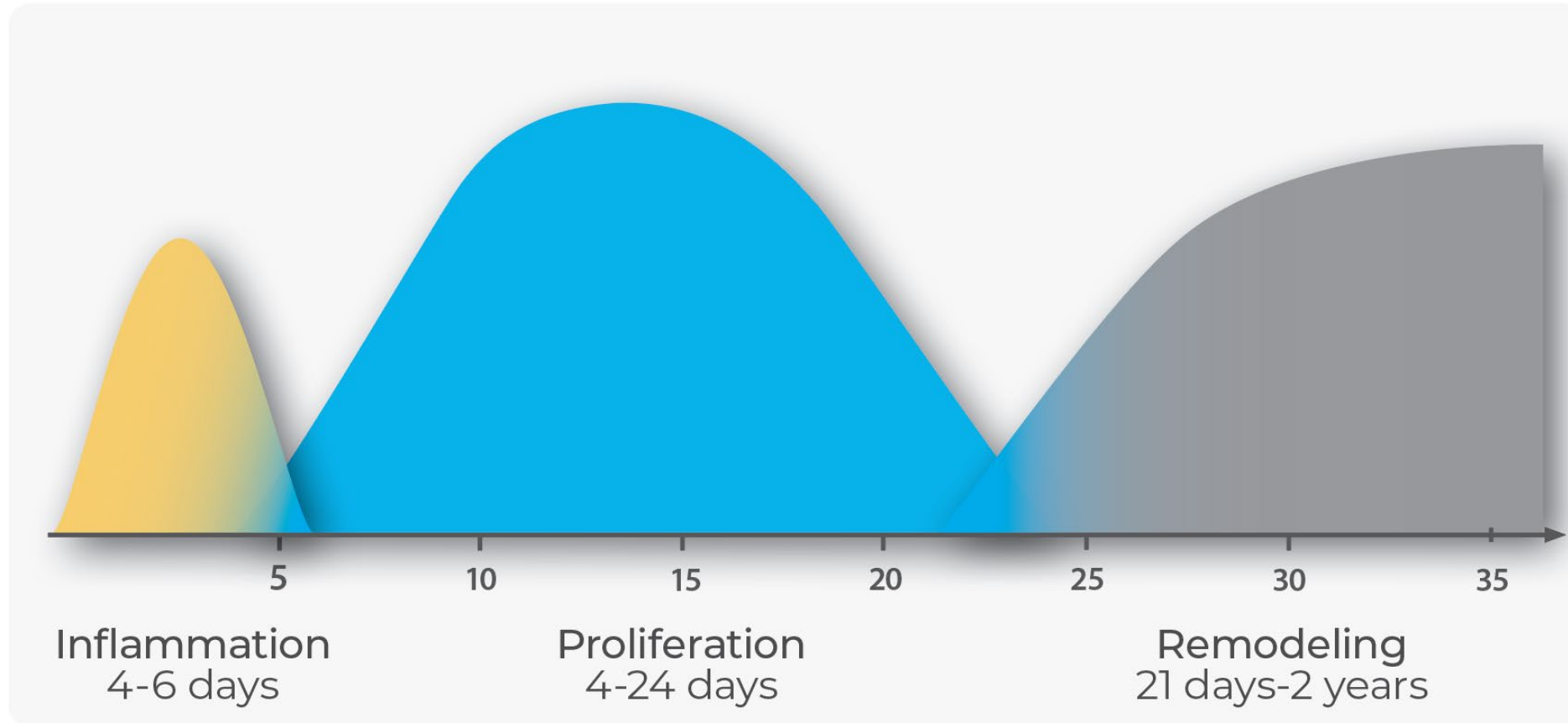


Outline

G4Derm^{plus}

- Clinical Challenges of Complex Wounds
- What is a Self-Assembling Peptide?
- Product Introduction and Indications for Use
- Key Benefits & Versatility for Complex Wounds
- Surgical Specialties
- Product #, Sizes, & Wound Area Coverage
- Application Guide
- Package Contents, Shelf Life, and Storage
- Cautions and Contraindications
- Regulatory Clearance

The Stages of Healing Are Similar Throughout the Body



There Are Risk Factors that Impair Healing and/or Delay Wound Closure¹



Patient

- Diabetes
- Older age
- Obesity
- Smoking
- Vascular disease
- Immune suppression
- Immune disease
- Immobilization
- Cancer
- Poor nutrition
- Neuropathy
- Systemic medications
- Chronic inflammation
- Demographic factors
- Psychosocial factors
- Non-compliance



Defect/Wound

- Contamination or infection
- Exposed tendon or bone
- Recurrence
- Irradiated tissue
- Size or depth of defect (e.g., tunneling wound)



Timing

- Slow healing
- Chronic wound
- Not yet candidate for definitive closure



More Comorbidities = Higher Risk of Complications^{2*}

**In certain patient populations*

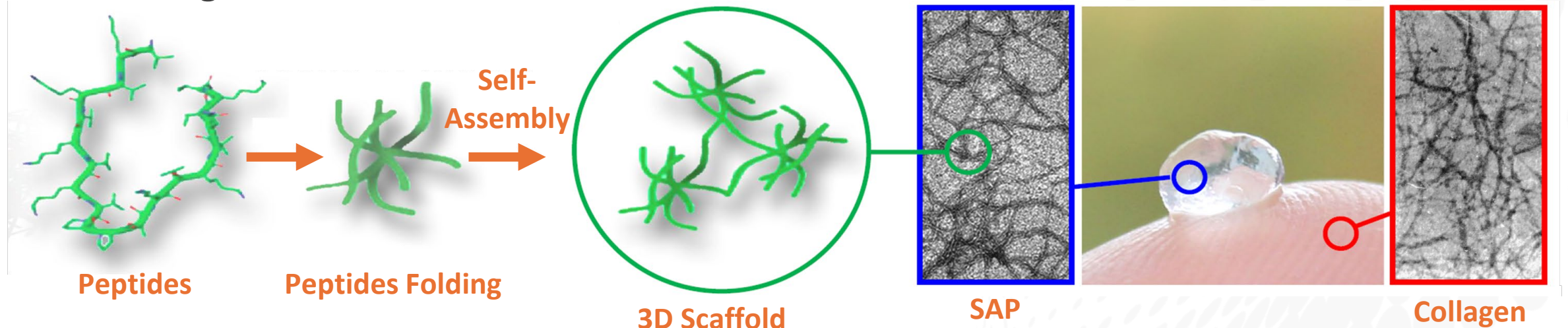
1. Atkin L, et al. J Wound Care. 2019;23(Sup3a):S1-S50. 2. Thombs BD, et al. Ann Surg. 2007;245(4):629-634.

What Is a Self-Assembling Peptide (SAP)?

G4Derm^{plus}

- Short peptides made of essential amino acids
- Synthetically manufactured
- Supportive 3D scaffold that mimics the native Extracellular Matrix (ECM)
- Designed to support cell infiltration, revascularization, and tissue repair
- Matrix can act as a barrier against bacterial penetration

Peptide molecules spontaneously organize into a functional matrix



Data on File. Gel4Med, Inc.

What Is G4Derm[®] Plus?

G4Derm^{plus}

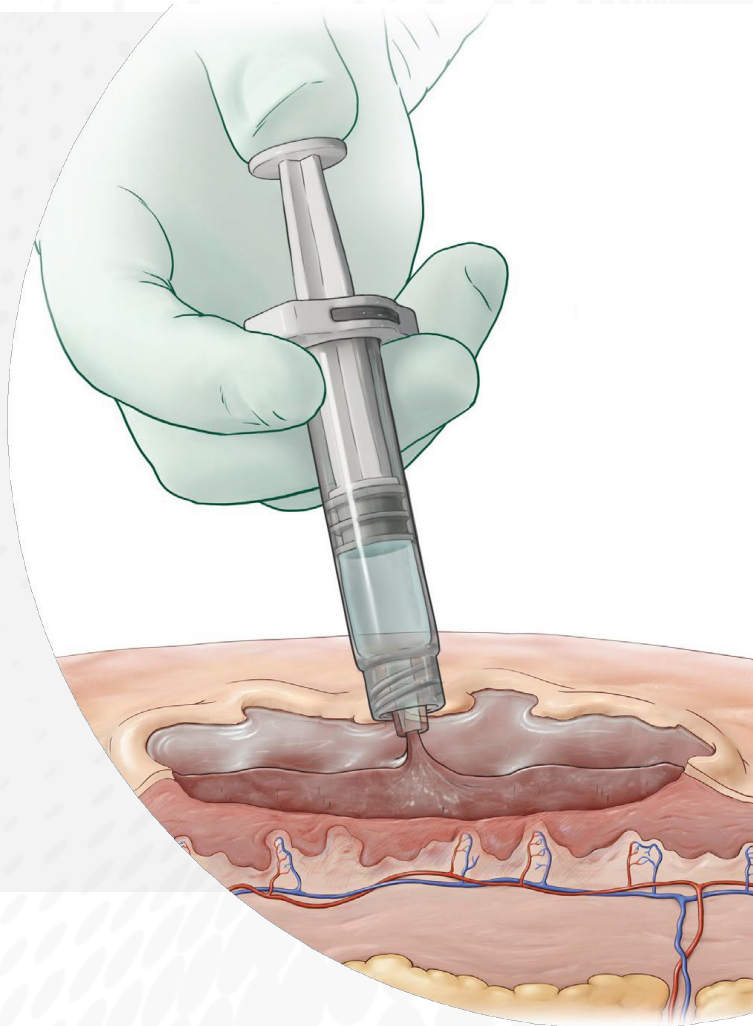
G4Derm Plus is an **acellular flowable Extracellular Matrix (ECM)** designed to optimally manage complex wounds.

It supports healing and serves as an antibacterial barrier to protect the wound bed from external contamination.¹

G4Derm Plus utilizes **self-assembling peptide technology** to form a supportive scaffold that **mimics the native ECM.**^{1,2}

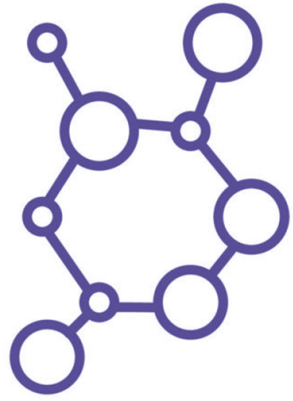
The resorbable **Biomimetic Matrix (BMM™)** facilitates:^{2,3}

- **Revascularization**
- **Granulation tissue formation**
- **Re-epithelization**



1. Date on File, FDA 510(k) submission package. Gel4Med, Inc. 2. Data on File, Scanning Electron Microscopy of G4Derm Plus. Gel4Med Inc. 3. Data on File, G4Derm Plus Full-Thickness Excisional Wound Healing Study in Swine. Gel4Med, Inc.

Designed to Support Host Tissue Repair^{2,3} & Antibacterial Protection⁴



Flowable matrix enters the wound, conforms to the wound surface and eliminates dead space.¹



Cells begin infiltrating the scaffold and attach to the peptide-based biomimetic matrix to support tissue regrowth and revascularization.^{2,3}



The matrix serves as an **antibacterial barrier**, protecting the wound from external bacterial contamination.⁴

Pre-clinical results may not translate to humans.

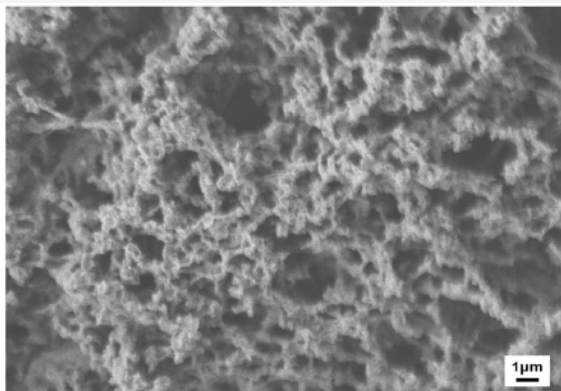
1. Data on File. Void-Filling Test of G4Derm Plus. Gel4Med, Inc. 2. Data on File. Scanning Electron Microscopy of G4Derm Plus. Gel4Med, Inc. 3. Data on File. G4Derm Plus Full-Thickness Excisional Wound Healing Study in Swine. Gel4Med, Inc. 4. Data on File. FDA 510(k) submission package. Antibacterial Barrier Effectiveness of G4Derm Plus. Gel4Med, Inc.

G4Derm Plus Serves as a Scaffold for Cellular Infiltration and Capillary Ingrowth¹

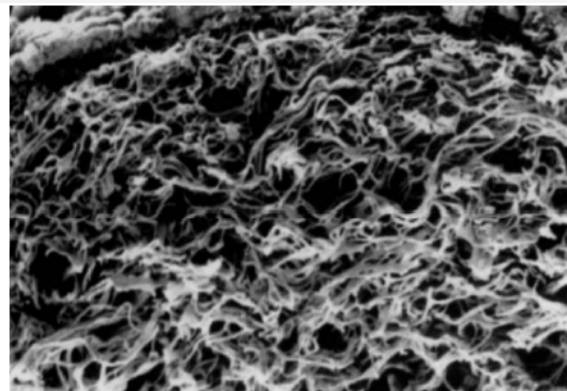
G4Derm^{plus}

G4Derm Plus mimics the microarchitecture of the native ECM.

Scanning Electron Microscopy (SEM) magnification 5,000x and 270x, respectively.



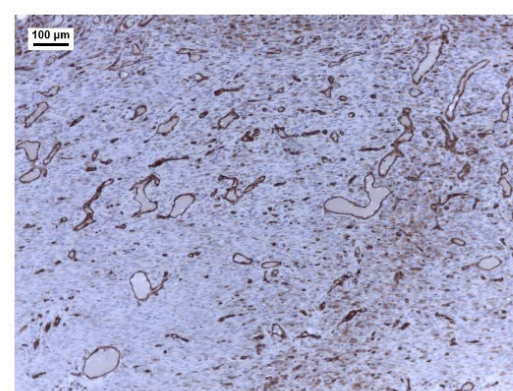
G4Derm Plus¹



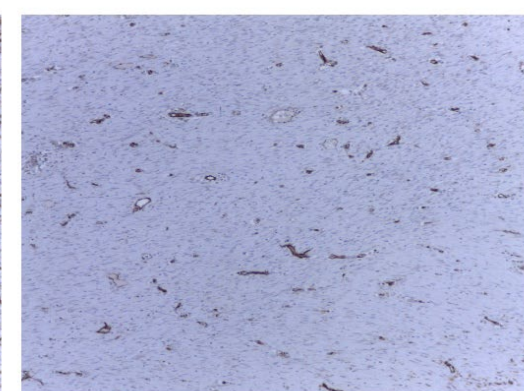
Native ECM²

G4Derm Plus supported revascularization *in vivo*.

Immunohistochemistry staining of CD31 (**blood vessels**) in wounds treated with G4Derm Plus or bovine collagen in a swine full-thickness excisional wound model.³



G4Derm Plus



Bovine Collagen

Pre-clinical results may not translate to humans.

1. Data on File. RR-0005; Scanning Electron Microscopy of G4Derm Plus. Gel4Med Inc. 2. Tsuji T, et al. A new method for scanning electron microscopic visualization of dermal elastic fibers. J Microsc. 1979;115(2):165-173.

3. Data on File. G4Derm Plus Non-GLP Full-Thickness Excision Wound Healing Study in Swine. Gel4Med, Inc.

G4Derm Plus Forms a Barrier to External Bacterial Contamination of the Wound Surface

ANTIBACTERIAL BARRIER



In vitro study demonstrated that G4Derm Plus served as an effective antibacterial barrier for up to 7 days against:

- Gram-positive bacteria^{*}
- Gram-negative bacteria^{*}

^{*}Including motile species

Pre-clinical results may not translate to humans.

1. Data on File, FDA 510(k) submission package. Antibacterial Barrier Effectiveness of G4Derm Plus. Gel4Med, Inc.

Indications for Use

G4Derm^{plus}

G4Derm Plus may be used under the supervision of health care professionals for the local management of partial- and full-thickness wounds including:

- Surgical wounds
- Pressure ulcers
- Diabetic ulcers
- Lower extremity ulcers including venous, arterial, and mixed etiology
- First-degree and partial thickness burns



Key Benefits

G4Derm^{plus}



- **Biomimetic matrix** that supports:^{1,2}
 - Revascularization
 - Granulation tissue formation
 - Re-epithelization
- Allows for **maximal wound bed contouring** and **filling soft tissue voids**³
- Serves as a durable **antibacterial barrier**^{4,5}
- **Ready-to-use pre-filled Syringe**
- **Up to 3-year shelf life**⁶

1. Data on File. RR-0005; Scanning Electron Microscopy of G4Derm Plus. Gel4Med, Inc. 2. Data on File. G4Derm Plus Full-Thickness Excisional Wound Healing Study in Swine. Gel4Med, Inc. 3. Data on File. Void-Filling Test of G4Derm Plus. Gel4Med, Inc. 4. Data on File. Antibacterial Barrier Effectiveness of G4Derm Plus. Gel4Med, Inc. 5. Data on File. FDA 510(k) submission package. Gel4Med, Inc. 6. Data on File. G4Derm Plus Stability and Shelf-life. Gel4Med, Inc.

Versatile for Wounds



Application Considerations	G4Derm ^{plus}
Biomimetic Matrix	✓
Serves as a Durable Antibacterial Barrier ^{1,2}	✓
Wound Area Coverage (2 mL ≈ 25 cm ²)	✓
Flexible Applicator Tip May Reach Deeper Wounds (Applicator Tip Length: ~ 12.5 cm)	✓
Coating Thickness of Flowable Matrix (~ 1 mm)	✓
Ready to Use and Easy to Apply	✓

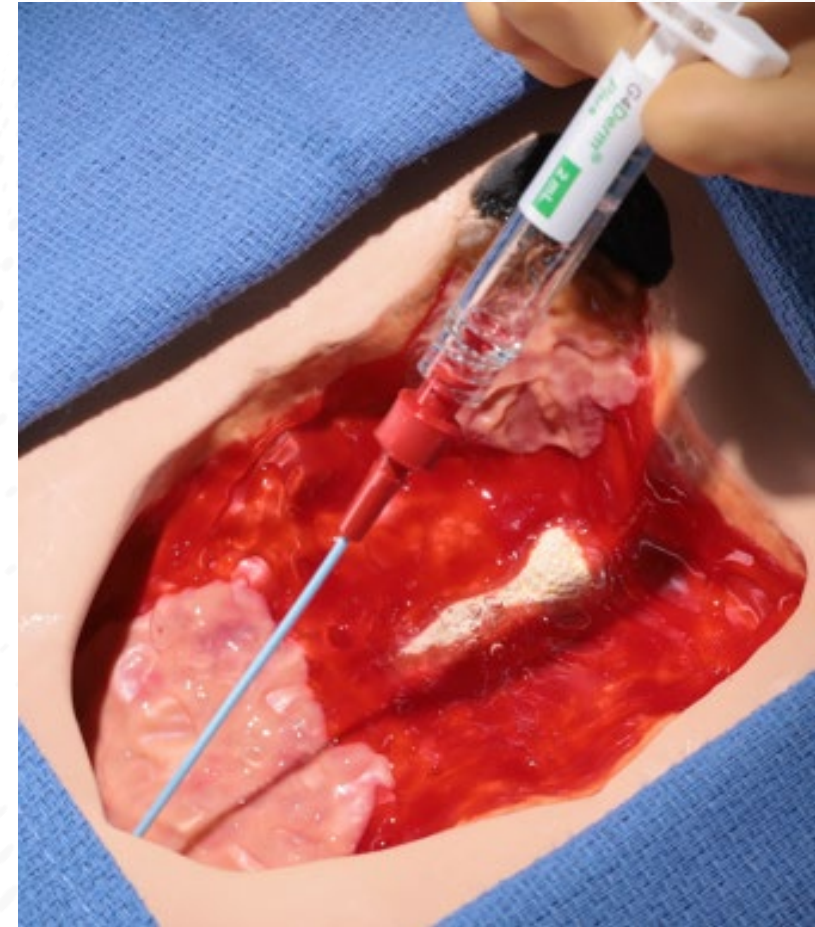
1. Data on File. Antibacterial Barrier Effectiveness of G4Derm Plus. Gel4Med, Inc. 2. Data on File. FDA 510(k) submission package. Gel4Med, Inc.

Suitable for Wounds Across Diverse Surgical Specialties

G4Derm^{plus}

POTENTIAL EXAMPLES

- Plastic Reconstruction
- Foot and Ankle
- Trauma
- General
- Vascular
- Orthopedic
- Spine
- Burns



Product Size, Storage, Shelf Life, & GTIN

G4Derm^{plus}



STORAGE

- Store at +2°C to +30°C (+36°F to +86°F)
- Do not freeze
- Avoid excessive heat
- Keep dry

SHELF LIFE

- Up to 3 Years

G4Derm Plus 2 mL Syringe and Applicator Tip/Nozzle (Applicator Tip/Nozzle Length: ~ 12.5 cm)

Product #	GTIN #	Syringe Volume (mL)	~ Wound Area Coverage (cm ²)	~ Coating Thickness (mm)
G4M200M	00850058790138	2 mL	25 cm ²	1 mm

Application Guide¹

G4Derm^{plus}



Before Use: Read Instructions for Use. G4Derm Plus is **intended for use in adults 18 years of age or older.** Confirm there is no damage to pouches, Syringe, or flexible Applicator Tip. Do not use the product if damaged or leaks are noted. Do not use the product if the Syringe top cap is disconnected.

1. **Clean and prepare the wound area** including debridement when appropriate. Thoroughly **dry the surrounding skin.**
2. From the non-sterile field, **peel open the single pouch** using aseptic technique and **transfer the sterile G4Derm Plus Syringe** (and optional flexible Applicator Tip, if needed) **to the sterile field.**[^]

1. G4Med, Inc. G4Derm Plus: Instructions for Use. Document No. PL-0001 Rev 3.0. Brighton, MA.

[^] Not included in Instructions for Use.

Application Guide (cont.)¹

G4Derm^{plus}

3. Remove Top Cap



3. **Hold the Syringe and remove the top cap.**
 - **Optional:** If using the flexible Applicator Tip for application, connect the flexible Applicator Tip by securely attaching it to the syringe head.
4. Prior to G4Derm Plus application, **prime the Syringe by gently pulling the plunger rod backward until you feel a slight resistance to release** the vacuum within the Syringe. (see image to right)

4. Prime Syringe



1. G4Med, Inc. G4Derm Plus: Instructions for Use. Document No. PL-0001 Rev 3.0. Brighton, MA.

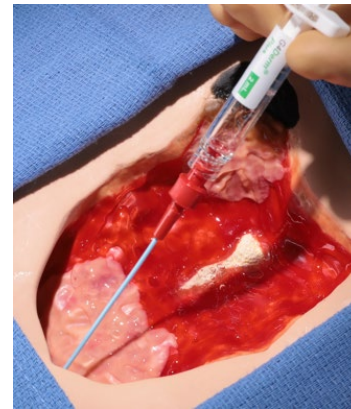
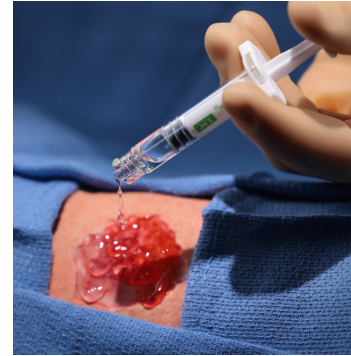
Application Guide (cont.)¹

G4Derm^{plus}

5. **Dispense G4Derm Plus directly onto the wound by gently pressing the plunger rod. Apply enough product to coat the wound bed. Fill any void spaces.**
 - **Precaution:** The recommended maximum patient exposure of G4Derm Plus is 10 g/day
 - 10g of G4Derm Plus = 5 units of 2 mL[^]
6. **After product application, cover with appropriate non-absorbent, non-adherent contact layer.**
 - **Examples of recommended non-petrolatum and non-absorptive dressings:**
 - Adaptic[®] Touch, Mepitel[®] (soft silicone), and Telfa[®].[^]
 - **DO NOT APPLY the following products directly on G4Derm Plus:** The foam used for Negative Wound Pressure Therapy (NWPT), absorbent dressings, silver dressings, and antibiotic beads.[^]

Secondary dressing is determined by wound characteristics and clinician preference.

7. **Re-application:** G4Derm Plus should be reapplied at dressing changes as needed.
 - Note: The majority of G4Derm Plus is bioresorbed in approximately 7 to 10 days after application.^{2^}



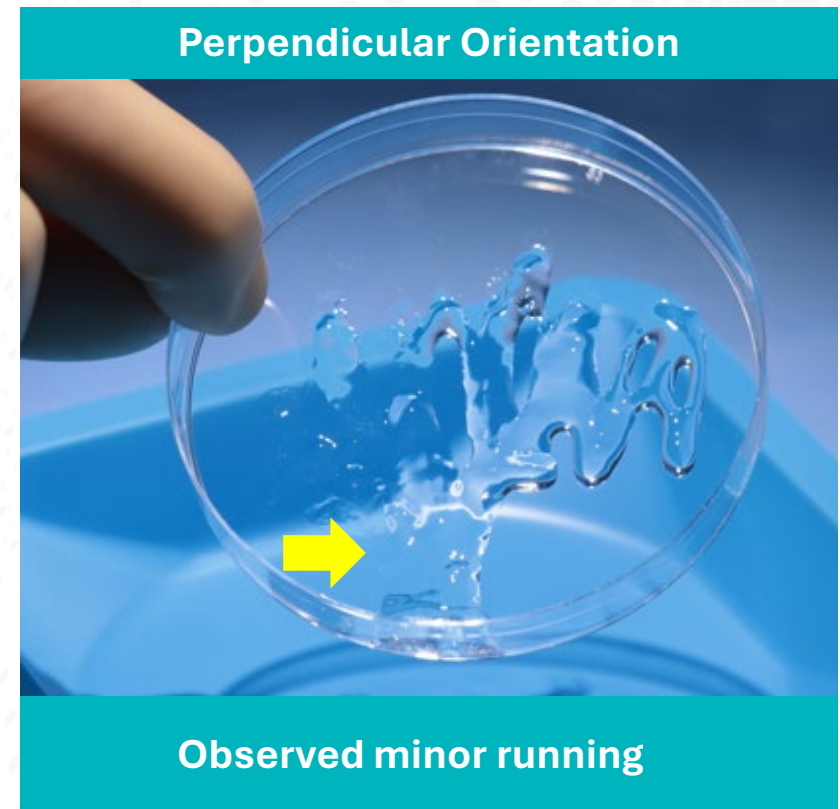
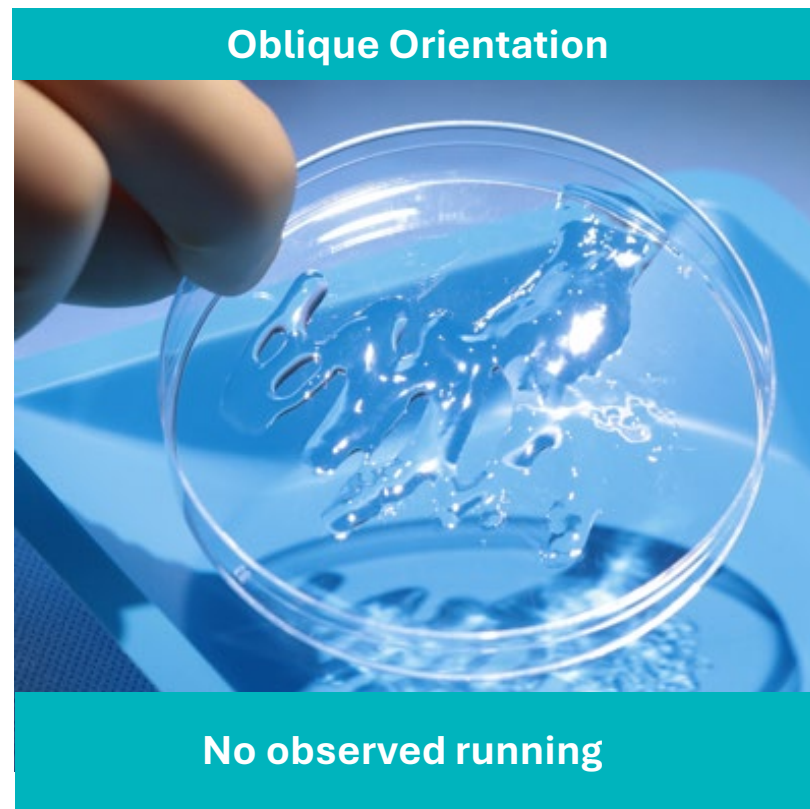
1. G4Med, Inc. G4Derm Plus: Instructions for Use. Document No. PL-0001 Rev 3.0. Brighton, MA. 2. Data on File. FDA 510(k) submission package. Gel4Med, Inc. [^] Not included in Instructions for Use.

Product Handling & Application Considerations

G4Derm^{plus}

- G4Derm Plus is a flowable biomimetic wound matrix intended to facilitate controlled handling and application.
- When applied continuously or intermittently, the product moves smoothly from the syringe with or without the flexible Applicator Tip.

G4Derm Plus Applied at Multiple Orientations (~3 seconds each)



Product Is Provided Sterile Packaged for Single Use Only

G4Derm^{plus}

Box Includes:

- One sterile single-use pre-filled G4Med Plus Syringe (2 mL)
- One sterile single-use flexible Applicator Tip
- Instructions for Use (IFU)
- 6 patient labels

Shelf Life and Storage:

- Up to 3-year shelf life
- Store at +2°C to +30°C (+36°F to +86°F) in dry area
- Avoid freezing



Precautions

G4Derm^{plus}

- Keep out of the reach of children.
- Not for injection.
- The recommended maximum patient exposure of G4Derm Plus is 10 g/day.
- G4Derm Plus is a sterile product. Do not re-sterilize.
- Product is guaranteed to be sterile and nonpyrogenic unless the package is opened or damaged.
- Do not use G4Derm Plus if the package seal is broken.
- Apply the product promptly after opening the package to prevent contamination.
- To minimize the possibility of cross-contamination, the contents of one pre-filled Syringe should be used during a single patient procedure only.
- Thoroughly wash and dry hands before using the product.
- When applicable, use sterile gloves to prevent contamination.
- Discard product if mishandling has caused possible damage or contamination.

G4Med, Inc. G4Derm Plus: Instructions for Use. Document No. PL-0001 Rev 3.0. Brighton, MA.

Contraindications¹

G4Derm^{plus}

Do not use G4Derm Plus on patients with a known sensitivity / previous allergic reaction to the product or any of its components.

No contraindications related to contaminated wounds*

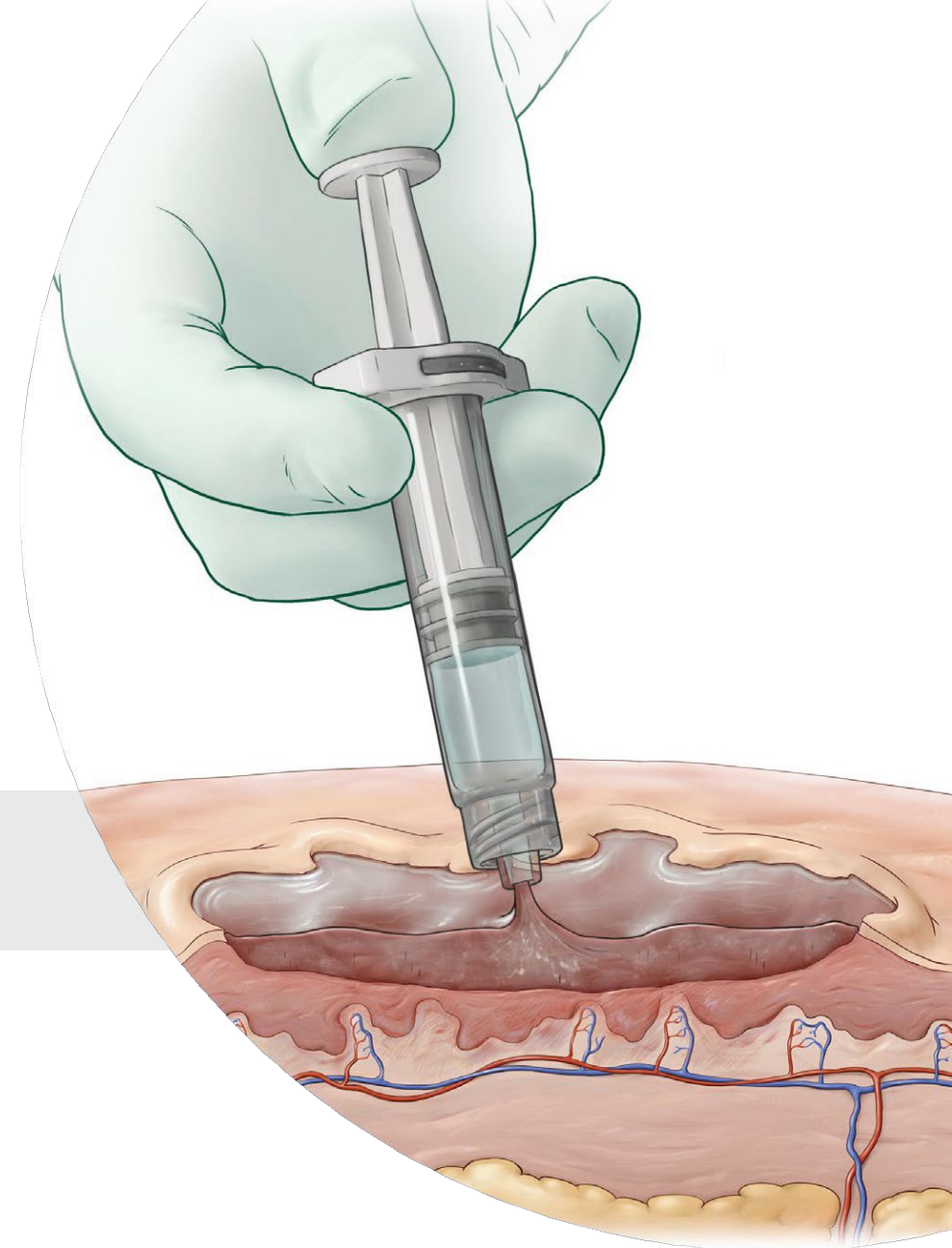
1. G4Med, Inc. G4Derm Plus: Instructions for Use. Document No. PL-0001 Rev 3.0. Brighton, MA.

* This is not stated in the Instructions for Use.

G4Derm^{plus}

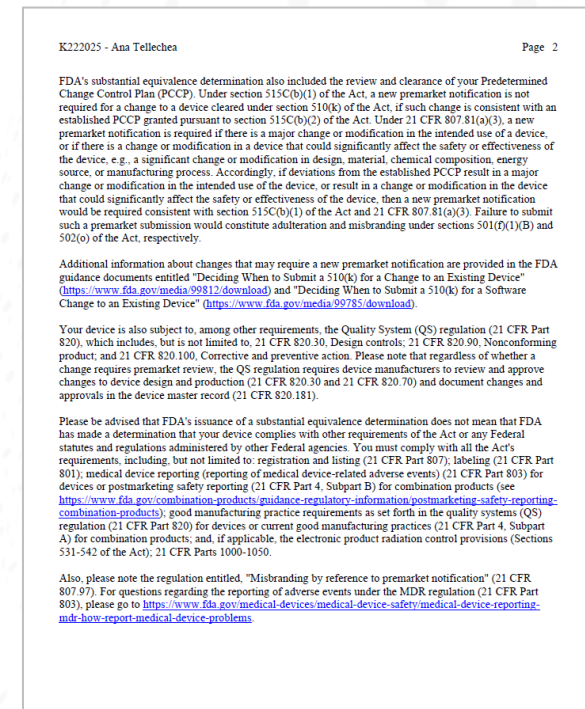
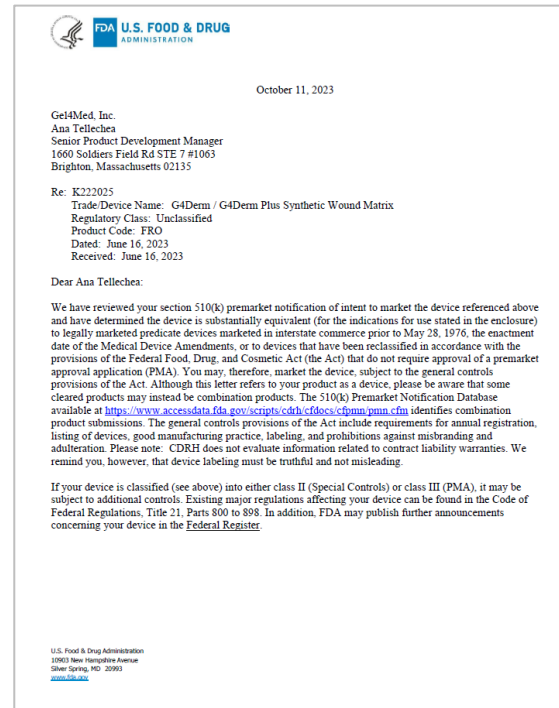
Biomimetic Matrix

Regulatory Clearance



510(k) Regulatory Clearance

- **G4Derm Plus** was 510(k) cleared in **2023** as a medical device.
- **Manufacturer: Gel4Med, Inc.**



U.S. Food and Drug Administration. 510(k) Premarket notification clearance letter: G4Derm / G4Derm Plus Synthetic Wound Matrix. 510(k) No. K222025. Silver Spring, MD, Center for Devices and Radiological Health; October 11, 2023.

Indication for Use: G4Derm Plus may be used under the supervision of health care professionals for the local management of partial-and full-thickness wounds including pressure, and diabetic ulcers; lower extremity ulcers including those of venous, arterial and mixed etiology; surgical wounds; first-degree and partial thickness burns.

Healthcare professionals must use their own clinical judgment in evaluating appropriate treatment options for a particular patient. Treatment of a specific patient should be based on individual needs and the medical care deemed necessary by the patient's treating physician and institutional protocols. Always refer to the package insert, product label, and/or instructions for use before using any MIMEDX product. Products may not be available in all markets because product availability is subject to the regulatory and/or medical practices in individual markets. Please contact your MIMEDX representative if you have questions about MIMEDX products.

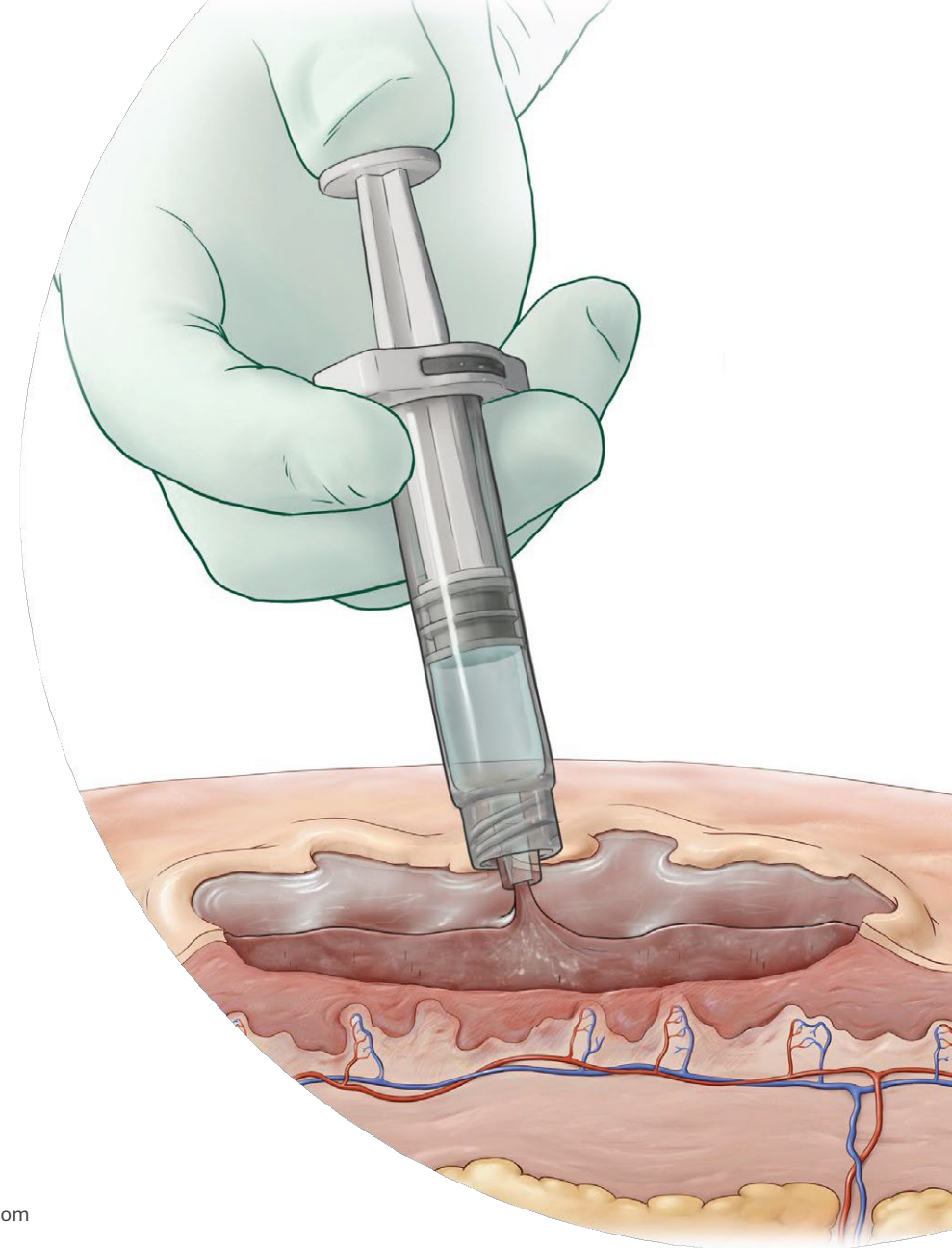
G4Derm^{plus}

Biomimetic Matrix

LEARN MORE ABOUT MIMEDX PRODUCTS

866.477.4219

customerservice@mimedx.com



G4Derm Plus is owned and manufactured by Gel4Med Inc. and distributed by MIMEDX Group, Inc.

MIMEDX is a trademark of MIMEDX Group, Inc. All other trademarks are owned by their respective owners. ©2026 MIMEDX Group, Inc. All rights reserved. mimedx.com