

FAQ: MESHING THE PRODUCT



AMNIOEFFECT®

Q Is it possible to place AMNIOEFFECT® through a mesher to fenestrate the product?

A MIMEDX assessed the feasibility of passing dry and hydrated AMNIOEFFECT products through a skin mesher (4MED Rosenberg Skin Mesher, Exsurco® Medical*) at a 1:1 ratio setting on a solid carrier (Figure 1) and both methods were observed to be acceptable. The mesher will create full thickness perforations which will allow for expansion of the product (Figures 2 and 3).¹

Meshing Product in Dry State:

- It is recommended that the user transfer the meshed allograft in a dry state to the application site prior to hydration and/or expansion to prevent entanglement.
- Attempting to expand the meshed allograft in a dry state prior to hydration may result in cracking or breaking.

Meshing Product in Hydrated State:

- Prepare the allograft by submerging it in sterile saline solution until saturated.
- Advance the AMNIOEFFECT product on the carrier sheet through the mesher.
- Delamination of AMNIOEFFECT may result from meshing the allograft in a hydrated state. If this occurs, reapproximate the separated layers of the allograft prior to application.
- Transfer the meshed allograft to the application site with care to prevent entanglement.

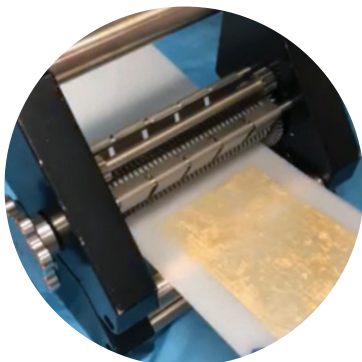
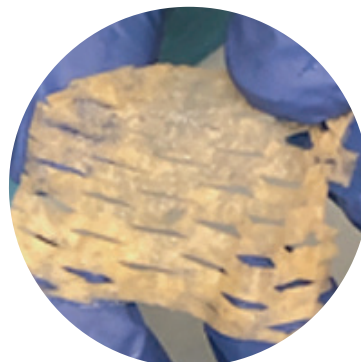
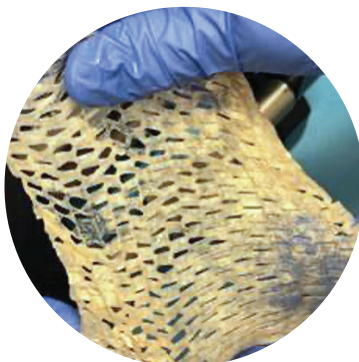


Figure 1:
An AMNIOEFFECT large sheet on a solid carrier advancing through mesher.



Figures 2 and 3:
Small (4 cm x 5 cm) and large (9 cm x 10 cm) AMNIOEFFECT sheets that have been run through a mesher.

Please note, a pre-meshed or fenestrated AMNIOEFFECT configuration is not commercially available from MIMEDX at this time. The meshed product results presented are specific to the aforementioned allograft preparation and mesher settings. Variations in preparation, settings, and equipment may not produce the same results.

Learn more about
MIMEDX products:

☎ Customer Service: 866.477.4219

✉ Email: customerservice@mimedx.com

Exsurco is a trademark of Exsurco Medical, Inc. 1. MIMEDX Internal Report. MM-RD-00122, Testing Feasibility of Using Skin Mesher on LHACM. *Mesher Product Code: 9910100

MIMEDX

Purion

Patents and patents pending see: www.mimedx.com/patents. AMNIOEFFECT, PURION, and MIMEDX are trademarks of MIMEDX Group, Inc. ©2023 MIMEDX Group, Inc. All Rights Reserved. www.mimedx.com US-LS-2200017 v2.0