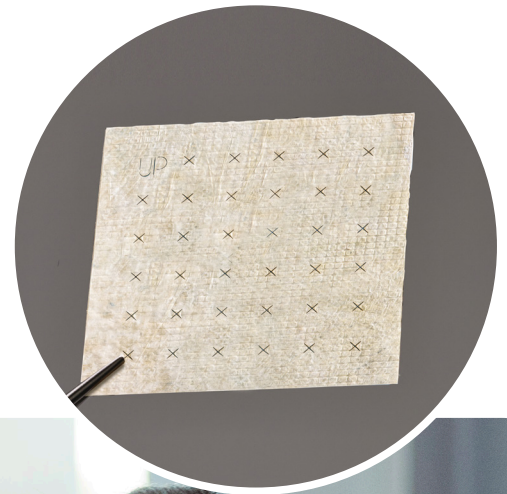


EPIXPRESS[®]



FENESTRATED TRI-LAYERED
HUMAN PLACENTAL ALLOGRAFT

Provides a Protective
Environment to Support
the Healing Cascade



From the Maker of EPIFIX[®]

MIMEDX



EPIXPRESS® is a lyophilized human placental allograft membrane that includes the amnion layer, intermediate layer, and chorion layer. EPIXPRESS is intended for use as a barrier to provide a protective environment in acute and chronic wounds. The PURION® process preserves Extracellular Matrix (ECM) components including 300+ regulatory proteins.¹

Product Advantages

- Fenestrations allow for transfer of exudate
- Easy to apply
- Can be repositioned after hydrating
- Compatible with compression therapy, Negative Pressure Wound Therapy (NPWT), and Hyperbaric Oxygen Therapy (HBOT)
- Terminally sterilized
- Shelf-stable*
- 5-year shelf life



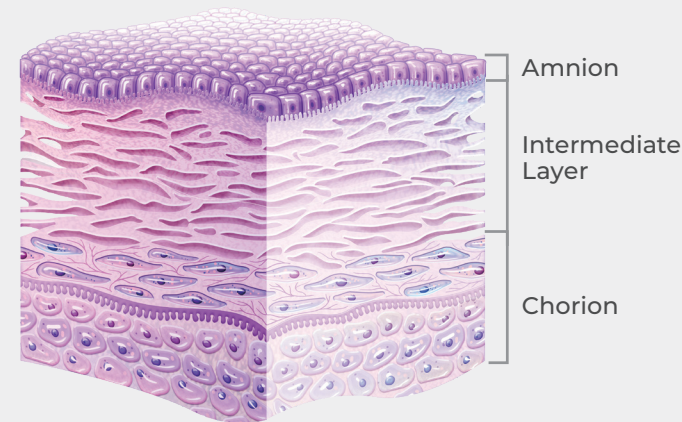
0.6 mm thickness** for optimal handling



Repositionable after hydration

Potential Clinical Uses

- Acute Wounds
- Chronic Wounds
- Post-Debridement
- Dehisced Wounds
- Diabetic Foot Ulcers (DFUs)
- Venous Leg Ulcers (VLUs)
- Pressure Ulcers (PUs)
- Deep or Tunneling Wounds



Optimized PURION Processing

The PURION process has been optimized for retention of the Intermediate Layer (IL). Separation of the amnion and chorion, with attached IL, ensures thorough cleansing of each layer prior to lamination into the tri-layer final configuration.

EPIXPRESS: Post-Processing

Intact Biocompatible Human ECM¹

- Structural components: Collagen I, III, IV; elastin
- Cell-binding domains: Fibronectin, collagen V, VII; hyaluronic acid
- ECM binding domains: Proteoglycans, laminin
- 300+ Regulatory Proteins

Application Made Easy

STEP ONE: Open

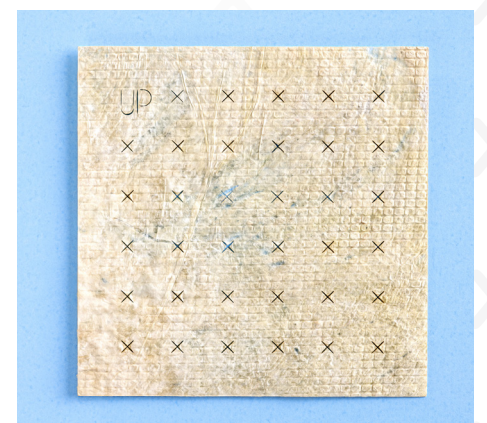
Remove the inner sterile pouch from the outer non-sterile pouch and present onto the sterile field. Slowly peel a corner of the inner peel pouch and grasp the EPIXPRESS with fingers or non-toothed, sterile forceps.

STEP TWO: Prepare

EPIXPRESS should be placed on the wound site, using the orientation of the lettering (e.g., UP) as a guide. Proper orientation can be noted when the fenestration nomenclature reads correctly from left to right.

STEP THREE: Apply

Place EPIXPRESS on the wound deficit. Hydrate if desired using sterile saline.

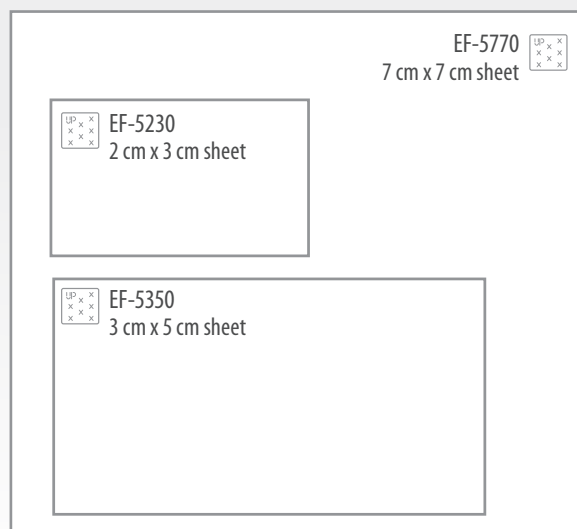


EPIXPRESS®

Item Numbers and Sizes

ITEM #	SIZE & DESCRIPTION
EF-5230	2 cm x 3 cm sheet
EF-5350	3 cm x 5 cm sheet
EF-5770	7 cm x 7 cm sheet

Q-Code: Q4361



MIMEDX CONNECT

Access multiple practice management tools in this online portal to simplify your workflow and maximize efficiency:

- Dedicated service team workflows integrated directly into the portal for increased efficiency
- Product specific coding and billing education, payer-specific guidance, documentation considerations, and appeals support
- One-on-one reimbursement support to help navigate complex payer scenarios
- Business reviews, accounting tools, IVR automation, and more



Scan to learn more and sign up

REFERENCE 1. Moreno S, Massee M, Campbell S, Bara H, Koob TJ, Harper JR. PURION™ processed human amnion chorion membrane allografts retain material and biological properties supportive of soft tissue repair. J Biomater Appl. 2024;39(1):24-39.

EPIFIX, EPIXPRESS, PURION, and MIMEDX are trademarks of MIMEDX Group, Inc. ©2025 MIMEDX Group, Inc. All Rights Reserved. mimedx.com US-EF-2400008 v4.0

Purion

MIMEDX