

NEW!

EPIEFFECT™



TRI-LAYER HUMAN
PLACENTAL ALLOGRAFT

Provides a Protective
Environment to Support
the Healing Cascade



From the Maker of EPIFIX®



EPIEFFECT™



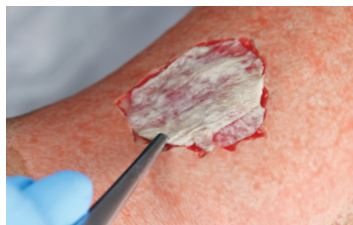
EPIEFFECT™ is a lyophilized human placental-based allograft membrane that includes the amnion layer, intermediate layer, and chorion layer. EPIEFFECT is intended for use as a barrier, to provide a protective environment in acute and chronic wounds. The product provides a biocompatible human Extracellular Matrix (ECM) and contains 300+ regulatory proteins.¹

Product Advantages

- Easy to apply
- Can be repositioned after hydrating
- Compatible with compression therapy, Negative Pressure Wound Therapy (NPWT), and Hyperbaric Oxygen Therapy (HBOT)
- Terminally sterilized
- Shelf-stable*
- 5-year shelf life



0.6 mm thickness** for optimal handling



Repositionable after hydration

Clinical Use Examples

- Acute Wounds
- Chronic Wounds
- Post-Debridement
- Dehisced Wounds
- Diabetic Foot Ulcers (DFUs)
- Venous Leg Ulcers (VLUs)
- Pressure Ulcers (PUs)
- Deep or Tunneling Wounds



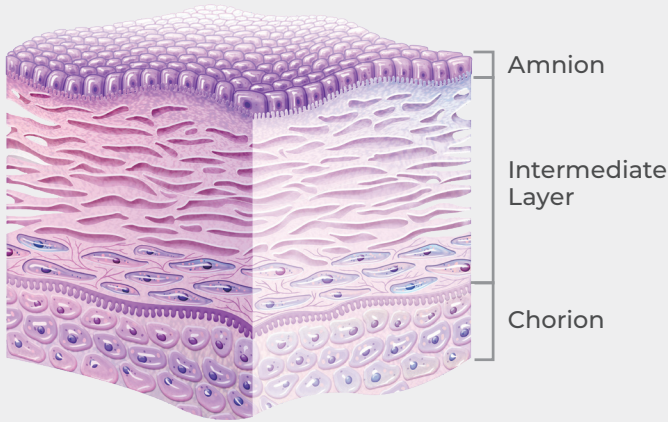


Figure 1: Cleansing During Processing[†]

Optimized PURION® Processing

The PURION process has been optimized for retention of the Intermediate Layer (IL). Separation of the amnion and chorion, with attached IL, ensures thorough cleansing of each layer prior to lamination into the tri-layer final configuration (Figure 1).

EPIEFFECT: Post-Processing

Intact Biocompatible Human ECM¹

- Structural components: Collagen I, III, IV; elastin
- Cell-binding domains: Fibronectin, collagen V, VII; hyaluronic acid
- ECM binding domains: Proteoglycans, laminin
- 300+ Regulatory Proteins

Application Made Easy*

STEP ONE: Open

Open the peelable corner of the non-sterile outer pouch and present the inner pouch into the sterile field. Slowly peel a corner of the inner peel pouch and grasp the EPIEFFECT with fingers or non-toothed, sterile forceps.

STEP TWO: Prepare

Identify the orientation. EPIEFFECT has a pattern on each side. The larger pattern (Figure 2) should be placed down on the wound. The smaller pattern (Figure 3) should face up.

STEP THREE: Apply

Place EPIEFFECT on the wound deficit. Hydrate if desired using sterile saline.



Figure 2: Larger pattern side faces **DOWN**



Figure 3: Smaller pattern side faces **UP**

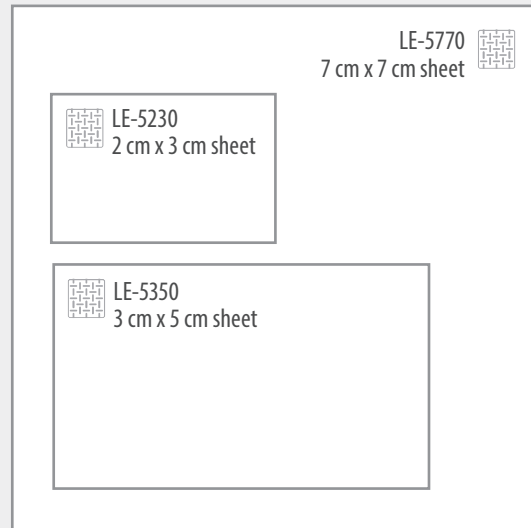
[†]This is a representation and not an actual image of the cleansing process

EPIEFFECT™

Item Numbers and Sizes

ITEM #	SIZE & DESCRIPTION
LE-5230	2 cm x 3 cm sheet
LE-5350	3 cm x 5 cm sheet
LE-5770	7 cm x 7 cm sheet

Q-Code: Q4278



Our teams are here to assist:

SALES:

Product In-Service Training, Case Coverage, and General Support

REIMBURSEMENT GROUP:

Coding, Billing, IVR Submission Education, Claims, and Remittance Review Appeals Support

MED ED LIAISONS:

Scientific and Clinical Education

Scan codes below to view physician testimonials using EPIEFFECT.



Dr. Megan Oltmann, DPM
Podiatric Surgeon

https://bit.ly/EPIEFFECT_DrOltmann



Dr. Andy Horine, MD
Family Medicine Physician

https://bit.ly/EPIEFFECT_DrHorine

Find out more about MIMEDX products or start an evaluation:
Customer Service: 866.477.4219
customerservice@mimedx.com

PATIENT INSURANCE
VERIFICATION TEAM:
855.882.8480 FAX: 855.537.5825
mimedxreimbursement@mimedx.com

REFERENCE 1. MIMEDX Internal Report. MM-RD-00101, Development of Lyophilized Human Amnion Chorion Membrane.

Patents and patents pending see: www.mimedx.com/patents. EPIEFFECT, PURION, and MIMEDX are trademarks of MIMEDX Group, Inc. ©2023 MIMEDX Group, Inc. All Rights Reserved. www.mimedx.com US-LE-2200004 v3.0

MIMEDX

Purion