



AXIOFILL™ ECM PARTICULATE

STEP ONE APPLICATION SITE PREPARATION

Prepare the application site and ensure the application area is properly debrided.

STEP TWO REMOVAL FROM PACKAGING

- Use aseptic technique when opening the non-sterile outer pouch and transferring the sterile vial to the sterile field.
- Slowly peel back the edges of the pouch to expose the sterile vial (Figure 1).
- **Do not shake or tap the glass vial with hard or metal instruments.**

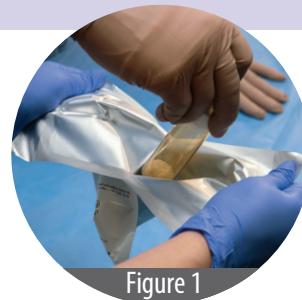


Figure 1

STEP THREE PREPARATION AND APPLICATION

AXIOFILL can be applied by dispersing the product from the vial uniformly onto the treatment area, or transferred to a sterile basin and then applied (Figure 2). AXIOFILL may be hydrated in the wound site by applying several drops of sterile saline solution.

AXIOFILL can also be formed into a paste by mixing with sterile saline solution in a separate dish (Figure 3). A paste consistency may be desired for treating challenging deep, tunneling, or irregular shaped soft tissue defects.

To create a paste with AXIOFILL, slowly mix 1.5 mL of sterile saline solution for every 250 mg of the particulate (Figure 4). Using more or less solution will produce a thinner or thicker consistency.



Figure 2



Figure 3

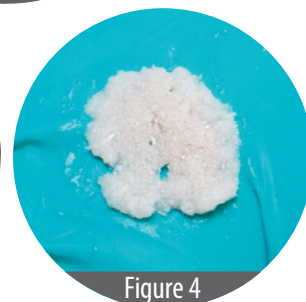


Figure 4

STEP FOUR DRESSINGS AND SUPPORT THERAPIES

- Cover AXIOFILL with a non-adherent contact layer and maintain a moist wound environment.
- AXIOFILL should not be disturbed, if possible, for several days or until the next application.
- AXIOFILL is compatible with offloading, compression, and negative pressure wound therapy (NPWT) (Figure 5).



Figure 5

For additional instructions and product information, please refer to the Instructions for Use included in the product carton.

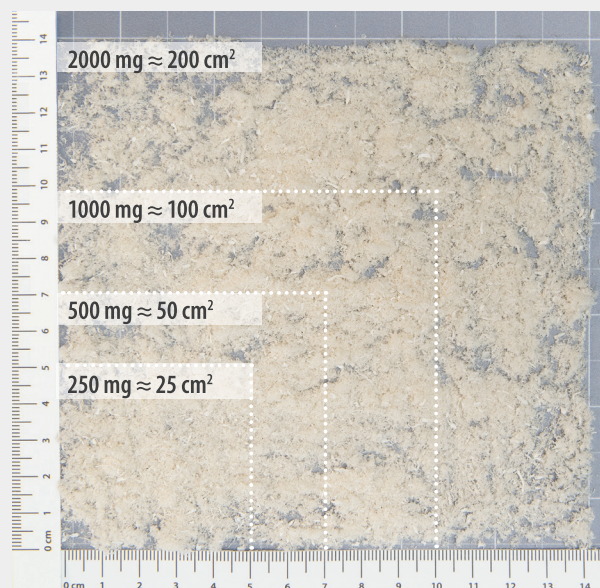


AXIOFILL Dry and Paste Application and Coverage Areas

Apply Dry for Particulate Consistency

Item #	Product Size	Approx. Dry Coverage*
PCM-0250	250 mg	25 cm ²
PCM-0500	500 mg	50 cm ²
PCM-1000	1000 mg	100 cm ²
PCM-2000	2000 mg	200 cm ²

*Approximate coverage will vary depending on application thickness



Hydrate for Paste Consistency

To create a paste, slowly mix 1.5 mL of sterile saline solution per every 250 mg of AXIOFILL. Use more or less sterile saline to create a thicker or thinner paste consistency.

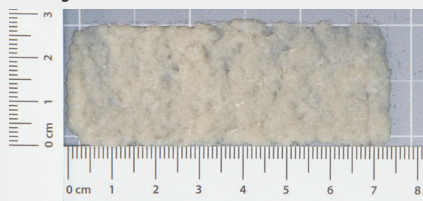
AXIOFILL	Dough	Paste	Slurry
250 mg	1.0 mL	1.5 mL	3.0 mL
500 mg	2.0 mL	3.0 mL	6.0 mL
1000 mg	4.0 mL	6.0 mL	12.0 mL
2000 mg	8.0 mL	12.0 mL	24.0 mL

500 mg + 2 mL saline ≈ 9 cm²



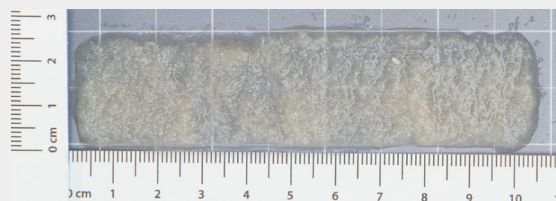
Dough

500 mg + 3 mL saline ≈ 18 cm²



Paste

500 mg + 6 mL saline ≈ 26 cm²



Slurry

Hydrated Reference Images: 500 mg with 2 mL, 3 mL, and 6 mL saline solution added



Scan QR code with your smartphone camera app to view a demonstration video of AXIOFILL.
https://bit.ly/MIMEDX_AXIOFILL

Learn more about MIMEDX products:

Customer Service: 866.477.4219
Email: customerservice@mimedx.com