

AXIOFILL™

ECM PARTICULATE



- Biocompatible acellular human placental extracellular matrix (ECM)
- Clinical use examples include deep, tunneling or irregular soft tissue deficits and incision management in surgical applications
- Product may be applied as a dry particulate or a hydrated paste

VERSATILITY IN COMPLEX TISSUE DEFECTS



Dry Particulate



Hydrated Paste

AXIOFILL is an acellular human placental extracellular matrix (ECM) derived from the placental disc. AXIOFILL preserves multiple ECM components and other matrix-bound proteins. AXIOFILL is intended for use in the replacement or supplementation of damaged or inadequate integumental tissue. It is compatible with adjunctive therapies like Negative Pressure Wound Therapy (NPWT) or Hyperbaric Oxygen Therapy (HBOT).

Clinical Use Examples

Dry Applications	Hydrated, Paste Applications
<ul style="list-style-type: none">Surgical debridementPartial and full thickness tissue deficitsPressure ulcersVenous ulcersDiabetic ulcersChronic vascular ulcersTrauma wounds (abrasions, lacerations, second-degree burns, and skin tears)Draining wounds	<ul style="list-style-type: none">Tunnel/undermined woundsFistulaeDeep, irregular woundsIncisionsSurgical wounds (donor sites/grafts, post-Mohs surgery, post-laser surgery, podiatric, and dehiscence)Other procedures possible

Product Advantages

- Versatile: easy to apply dry or hydrate into paste
- Scientific data supports preservation of ECM components, matrix-associated proteins/regulatory factors, and demonstrated cellular attachment²
- Economic alternative for large soft tissue defects
- Storage at 2-30°C with a 5-year shelf life
- Compatible with NPWT and HBOT

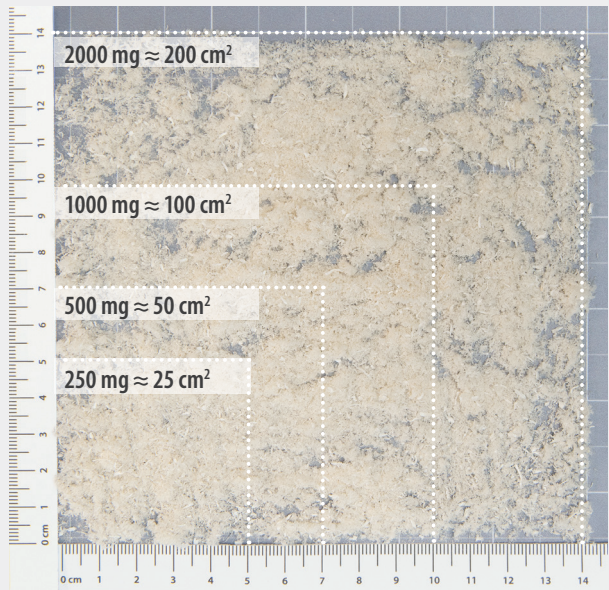


Usage for large, deep defects and incisions

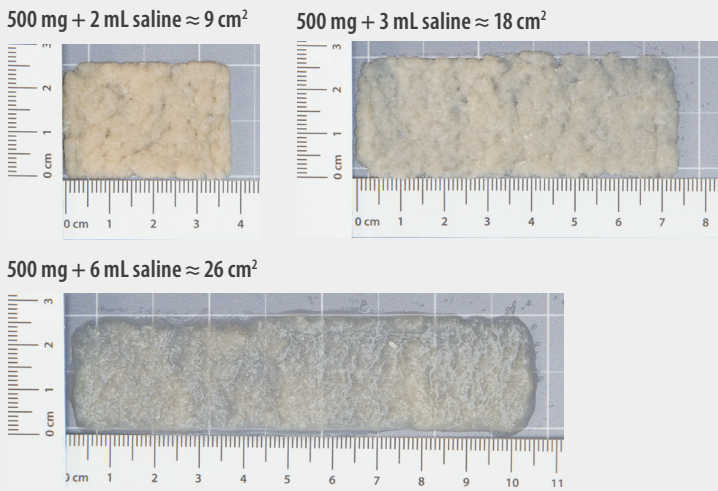


Hydrates easily to apply as a paste

Approximate coverage when dry



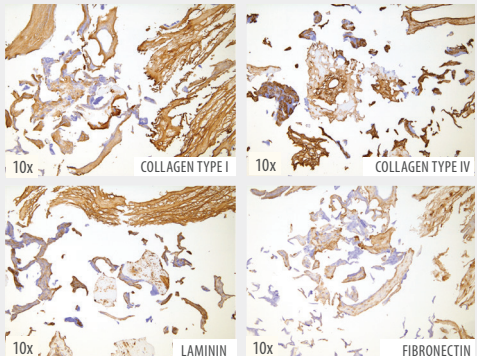
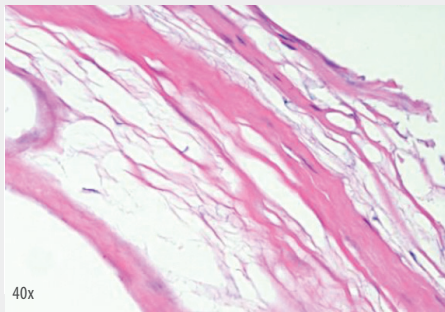
Approximate coverage when 500 mg AXIOFILL is hydrated with various amounts of saline.



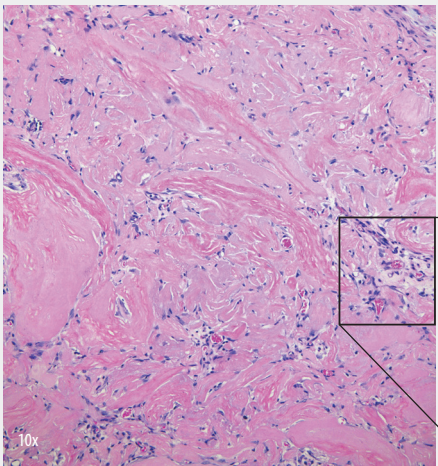
AXIOFILL: Histology Post-Processing

Gentle PURION® cleansing removes cells while preserving extracellular matrix components, matrix-associated proteins, and regulatory factors.¹

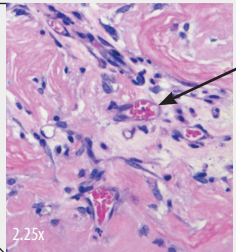
Decellularized, Biocompatible Scaffolding



IHC staining for specific ECM molecules, as indicated in the particulate final AXIOFILL product. Brown coloration indicates reactivity with antibody probe.



AXIOFILL restores site-appropriate and functional tissue by providing an environment conducive for cellular integration and remodeling in an *in vitro* subcutaneous implant model.¹



Clusters of dark pink-colored cells indicate formation of neovascularization throughout implant.

Application

DRY APPLICATION

- The outer peel pouch is NOT sterile. The inner vial containing the AXIOFILL is sterile (unless the pouch is damaged or compromised).
- Using aseptic technique, SLOWLY peel a corner of the peel pouch and remove the sterile vial.
- Do NOT tap the glass vial with hard or metal instruments.
- Post debridement, disperse from vial onto the treatment area, or transfer to a sterile basin and then apply.
- Optional: hydrate by applying several drops of sterile saline solution (Figure 1).

HYDRATED APPLICATION

- To achieve a paste consistency, begin by slowly mixing 1.5 mL of sterile saline for every 250 mg of AXIOFILL in a separate sterile bowl (Figure 2).
- Once the product has been hydrated, apply promptly to the treatment area (Figure 3).

See Instructions for Use for full details.



Figure 1.



Figure 2.



Figure 3.

Item #	Product Size	Approx. Dry Coverage*
PCM-0250	250 mg	25 cm ²
PCM-0500	500 mg	50 cm ²
PCM-1000	1000 mg	100 cm ²
PCM-2000	2000 mg	200 cm ²

*Coverage may vary depending on amount applied to wound site

Learn more about
MIMEDX products:

☎ Customer Service: 866.477.4219

✉ Email: customerservice@mimedx.com

1. Data on file. MIMEDX Research Report. MM-RD-00113, Non-GLP Evaluation of Placental Based Products for Cellular Response in a Mouse Subcutaneous Implant. 2. Data on File. MIMEDX Research Report. US-AX-2200005 v1.0. Matrix Composition of a Decellularized Human Placental Extracellular Matrix Particulate.



Patents and patents pending see: www.mimedx.com/patents. AXIOFILL, PURION, and MIMEDX are trademarks of MIMEDX Group, Inc. ©2022 MIMEDX Group, Inc. All Rights Reserved. www.mimedx.com US-AX-2200006 v1.0