

EPIFIX[®] APPLICATION GUIDE



EPIFIX[®]

EPIFIX is a dehydrated human amnion/chorion membrane allograft. EPIFIX sheets provide a semi-permeable protective barrier that supports the healing cascade and protects the wound bed to aid in the development of granulation tissue in acute and chronic closures. EPIFIX allografts have a 5-year shelf life and should be stored at room temperature.

STEP ONE WOUND BED PREPARATION

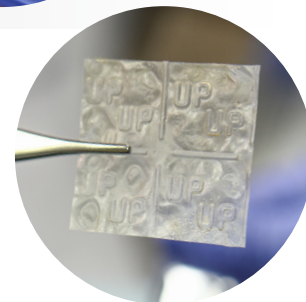
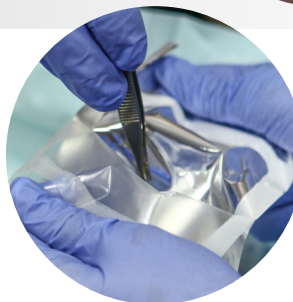
- Prepare wound bed as needed, using clinical judgment and ensure the wound is properly debrided



STEP TWO REMOVAL FROM PACKAGING

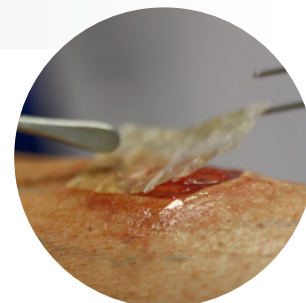
Using aseptic technique:

- Carefully open the peelable corner of the outer pouch and extract the inner pouch
- Once the pouch is open, remove EPIFIX with fingers or non-toothed, sterile forceps



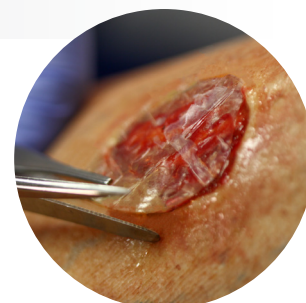
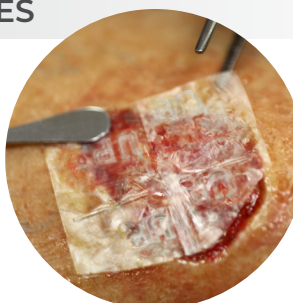
STEP THREE PREPARATION AND APPLICATION

- EPIFIX may be cut with sharp scissors to the size required
- Place EPIFIX on the wound site using the orientation of the embossment lettering as a guide (UP should read left to right)



STEP FOUR DRESSINGS AND SUPPORT THERAPIES

- Cover EPIFIX with a non-adherent contact layer and maintain a moist wound environment using the appropriate moisture management dressings for the wound type
- EPIFIX should not be disturbed, if possible, for several days or until the next application
- EPIFIX is compatible with offloading, compression, negative pressure wound therapy (NPWT), and hyperbaric oxygen (HBO) therapy



Scan here to view the EPIFIX application video. For full application instructions and additional product information, please refer to the Instructions for Use included in the product carton.